

song from the highest tower

a season in hell

eugene ball '09

slowly, rubato

Fmi/G Emi/G# Ami D13(#11)

ballad: ♩=60

3 Dmi7/F Dadd9/F# Emi/G G/A G(#5)/A

♩=♩.

5 Bbma7 Ebma7 A∅

11 G/G# C#ma7(#9) rit. Dmi G13(b9) free

slowly, rubato

17 Ami/B Abmi/C C#mi F#13(11)

ballad: ♩=60

19 F#mi7/A F#add9/A G#mi/B Bb7sus4 Ama7(b5) Ab/A Ab7sus Eb/G

♩=♩.

21 Dma7/F# Gma7/B C#∅ Ami/C Ami/C Fma7(#9) F7(#9)

slowly, rubato

27 F#mi B13(#11) Dbmi/Eb Cmi/E Fmi Bb13(#11) free

33 Fmi/G Emi/G# Ami D¹³(#11) Dmi⁷/F Dadd⁹/F# Emi/G G/A G(#5)/A



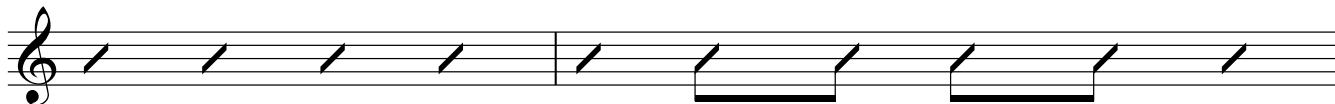
37 B^bma⁷ Ebma⁷ A[∅] G/G#



41 C#ma⁷(9) Dmi G¹³(b9) Ami/B Abmi/C C#mi F#¹³(11)



45 F#mi⁷/A F#add⁹/A G#mi/B B^b7sus⁴ Ama⁷(b5) Ab/A Ab⁷sus Eb/G



47 Dma⁷/F# Gma⁷/B C#∅ Ami/C Ami/C Fma⁷(#9) F#mi



51 B¹³(#11) C#mi/D# Cmi/E Fmi B^b13(#11)

